

LOS ANGELES BETSUIN

No. 432

September-October 2015

jihō

WWW

LOS ANGELES HONPA HONGWANJI BUDDHIST TEMPLE
FOUNDED 1905



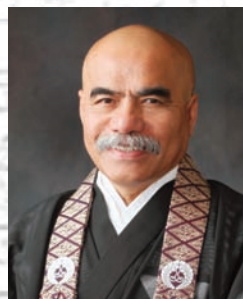
RIMBAN'S MESSAGE

THOUGHTS ON KARMIC PAST

"For those who make their living drawing nets or fishing in the seas and rivers, and those who sustain their lives hunting beast or taking fowl in the fields and mountains, and those who pass their lives conducting trade or cultivating fields and paddies, it is all the same. Under the influence of our karmic past we human beings will do anything."

In my previous life many kalpas ago, I was employed at Syntex Pharmaceuticals in Palo Alto. I was a research biologist in the department of physiology. Our department was responsible for testing, both biochemical and physiological effects, of new drugs that were in the development stage, on laboratory animals, and eventually for human use.

You might be familiar with one of our products the brand name, Aleve, actually originally this drug was by prescription only, under chemical name, Naproxen, however when our patent expired, Proctor and Gamble bought the rights



RIMBAN
WILLIAM BRIONES

to manufacture it under a new name Aleve. Naproxen was first synthesized back in 1968, just about the time I started at Syntex. I was on the original group that began testing the drug on laboratory animals. It is no exaggeration that for this one drug alone

from the time it was synthesized to the time it made its way to Walgreens, hundreds of thousands of animals were sacrificed so you wouldn't have to suffer the pain of arthritis or sore muscles and aching joints after exercising.

In the beginning I really never gave much thought on the moral and ethical implications that my occupation touched upon. In fact, as lofty and naïve as it sounds, I felt I was really contributing to benefit mankind. I was doing a job that I enjoyed, and took great pride in my work, not only that, but it put food on the table and it paid our mortgage.

Needless to say, there were a number of groups that objected to our research. The animal rights activists and the pro-life groups to name a few. They protested and advocated boycotts of products that contributed to this inhumane treatment to animals.

They protested just as I protested or boycotted companies back in the 60's and 70's that contributed to the war effort in Viet Nam. Companies like Dow Chemicals, Livermore Laboratory ... or companies that did business with the South Africa, an apartheid nation. Today we despise logging companies that cut trees down with disregard for the environment or nuclear power plants that have the potential to create the ultimate contamination. What kind

(continued on page 10)

Los Angeles
Hampa Hongwanji
Buddhist Temple
815 East First Street
Los Angeles, CA 90012

TEL: 213.680.9130
FAX: 213.680.2210

WEB: nishihongwanji-la.org

EMAIL: info@nishihongwanji-la.org

DANA OFFERINGS

by Rev. Koho Takata



REV. KOHO TAKATA

When I was assigned to the LA Betsuin, the temple provided me with a new computer to use in my office. There are many computers at the Betsuin and each staff person has their own computer provided by the temple. There is a big hard drive located in the storage room behind the hondo and our documents such as photos, death records, etc. are auto-

matically saved in a big hard drive each night at midnight. Each computer has its own unique name to identify the saved documents. When I received my new computer, I was asked to name my computer to identify my saved documents. I was thinking what name is good for my computer. I asked names of the other computers. There were such names as: Ebi, Panko, Sakura, Mirai, Kokoro, etc. I then reflected on the working of computer in order to name my computer.

The temple has wireless internet system. Whenever I want to surf websites or check my emails, I am able to visit the site because of the wireless internet. It was then when I came up with the name, "Oyasama," for my computer.

*Sakyamuni and Amida are our father and mother
Full of love and compassion for us
Guiding us through various skillful means
They bring us to awaken the supreme shinjin.
(CWS P.380, Hymns of the Pure Land Masters #74)*

Shinran Shonin referred to Sakyamuni Buddha as father of the Teaching, Wisdom, and Amida Buddha as mother of the Love, Compassion. Sakyamuni Buddha and Amida Buddha are our true parents of Wisdom and Compassion. Many followers of Shinran Shonin refer to Amida Buddha who represents Sakyamuni Buddha and all buddhas as *Oyasama* which means parents. Parents will love and cherish their children. They watch and worry about them throughout their lifetime. However, parental love has its human limitations. No matter how much we love and care for our children, we cannot completely accomplish what we wish for our children. In contrast, *Oyasama* or Amida Buddha's love and compassion is limitless and perfect. Amida Buddha's limitless compassion is showering on all beings at all times and in all places without any exceptions. When I reflected on the Amida Buddha's Great Compassion always reaching out to all beings equally even without our asking, I came up a name "*Oyasama*" for my computer.

When I use my computer and visit various websites, I can-

not see the internet connection because it is wireless. However, it is always working for me and enabling me to visit the websites or check my emails. Like the wireless internet connection, Amida Buddha has neither color nor form. I cannot see Amida Buddha's Compassionate Activities. However, Amida Buddha is always working for me. The Truth of the Dharma is always reaching to me. I am always interconnecting with Amida Buddha's Infinite Wisdom and Compassion.

Nowadays, many people carry the smart phone. We can receive emails at all times and in all places as long as there is the wireless internet service. It is like the working of Amida Buddha's Compassionate activities. Amida Buddha's Light of Wisdom and Compassion is reaching to all beings whenever and wherever we are. Moreover, Amida Buddha's Compassion is showering upon all beings, no matter who we are, without any distinctions whether we are young or old, good or evil, educated or uneducated, etc. based on the Primal Vow of Amida Buddha. In the case of email, the sender needs to choose a person who receive the message. In case of Amida Buddha, however, his calling voice is already reaching out to all beings without any exceptions. We are always interconnecting with the true reality of Infinite Wisdom and Compassion of the Buddha. The inconceivable working of the Primal Vow is reaching out to us equally at all times and in all places. Various convenient electrical devices are now my reminder of Amida Buddha's calling voice, *Namo-Amidabutsu*.

FALL OHIGAN SEMINAR

LIFE OF AWAKENING: TRUE TEACHING

Saturday, September 19, 2015
9:00 AM- 3:00 PM

SPEAKERS:

<p style="margin: 0;"><small>ENGLISH</small></p> <p style="margin: 0;">Rev. Ron Kobata</p> <p style="margin: 0;"><small>Buddhist Church of San Francisco</small></p>	<p style="margin: 0;"><small>JAPANESE</small></p> <p style="margin: 0;">Rev. Ryuta Furumoto</p> <p style="margin: 0;"><small>Senshin Buddhist Temple</small></p>
---	---

Registration:
\$15 (Includes bento lunch)

To reserve a seat and to order a bento lunch,
please send in your name & check payable to:

LA Homba Hongwanji Buddhist Temple

LA Betsuin Higan Seminar
815 E. 1st St. Los Angeles, CA 90012
by September 13, 2015

This seminar has been made possible by the
LA Betsuin Buddhist Education Committee

SHINRAN SHONIN'S WISH THROUGH THE ONDOBO SOCIETY

by Rev. Kazuaki Nakata



REV. KAZ

I truly enjoyed my fourth Obon at the Betsuin. I sincerely appreciate all of your timeless help and support to our annual Obon festival. Your generosity made our 2015 Obon successful. I appreciated working with everyone cleaning the parking area before setting up the stage and the vegetable pick up with Seibi Okita and his buddies. By helping with the preparations

for Obon, I felt the deep passion of the support our temple. *Arigato gozaimasu* to everyone and I will continue to put my passion into the Buddhist education at the Betsuin and spread Jodo Shinshu Buddhism.

I currently have several Buddhist education projects within and outside of the Betsuin. I would like to share one of my projects in the Boston area.

The Annual International Conference and Meeting for Thai Buddhist Missionary Monks was held at Wat-Nawamintarachutis (temple complex) in Raynham, Massachusetts from June 11 to 15, 2014. This event was held in conjunction with an International Buddhist Seminar (sponsored by Mahachulalongkorn Buddhist University "Public Buddhist University of Thai") and with Simanamitta Boundary-Marking Stone and Demarcation Ceremony at Wat-Nawamintarachutis. The temple complex sits on a 55 acre lot and approximately 350 Thai monks attended the event from all over the world.

The BCA established a mutual relationship with Thai Buddhists about 80 years ago in 1935. The Thai missionary in the U.S. was formed only 36 years ago in 1979. In the past, the Kingdom of Thai was called the Kingdom of Siam. His Royal Highness King Bumibol's older brother was the King of Siam at that time. According to Rev. Hiroshi Abiko's article, Bishop Kenju Masuyama and Rev. Shodo Tsunoda, representing the BCA were invited to the Royal Court of Siam in 1935 and they received holy relics of Shakyamuni Buddha, and his disciples Shariputra and Mahamaudgalyayana as a symbol of the mutual relationship with the Kingdom of Siam. The BCA, then, carefully and respectfully enshrined their relics in the Stupa at the Buddhist Church of San Francisco.

I was invited to the event to speak on the Strategic Management for Buddhist Organizations as to commemorate the 60th Anniversary Celebration of HRH King Bumibol Adulyadej's Accession to the Throne.

Because I had completed my MBA course with GPA 4.0, focused on nonprofit religious organization management,

they asked me to speak on how BCA sustained for over 100 years as a Buddhist organization in the U.S. In the beginning of my speech, on behalf of the BCA, I expressed the deep appreciation to HRH King Bumibol and the 350 Thai monks for the gift of the holy relics. I then went on to share several aspects of Buddhist organization management, such as human resource management, strategies for a financial sustainability and organizational branding theories. They were intrigued by the information and gave me extra time to speak.

Following the seminar, there was a six hour meeting on Buddhist education in the Boston metropolitan area and the northern East Coast with faculties of Mahachulalongkorn Buddhist University, Wat-Nawamintarachutis and leaders of various Buddhist organizations. In the West Coast, there are several Buddhist universities founded by Buddhist organizations, such as Institute of Buddhist Studies (IBS) by the BCA or University of the West by Hsi Lai Buddhist Temple where I am taking the courses in Buddhist Studies for my second masters degree. There are many universities offering Buddhist Studies for research purposes in the East Coast, however, none of them are focusing the applied Buddhism. Wat-Nawamintarachutis decided to establish a new university focusing the applied Buddhism. The university is tentatively called "*University of the East*". Phra Promwachirayan, Ph.D., the head of Wat-Nawamintarachutis appointed me as a founding and ad-hoc committee member of the university. The group picture was taken with other founding and ad-hoc committee members. My personal friend, Prof. B. N. Hebbbar of George Washington University agreed to lead the committee. The study of Jodo Shinshu Teachings is rarely taught in universities in the U.S. I am so honored to help establish the university and add the course of Jodo Shinshu Teachings to the university. The committee had started working with lawyers to complete all required documents for starting a new university. This past July, a letter was received stating the acceptance of the founding of the school. The project is now a few steps closer to the establishment of the school. My hope is that some time in the future, IBS will be able to send scholars to the new university to teach Jodo Shinshu to those in the Northeast Coast. This would be an important goal for a kaikyoshi minister (ministers whose purpose is to propagate) in the BCA. *gassho*

Reference:

Rev. Hiroshi Abiko, "*Rooftop Stupa*"

HIROSHIMA BWA DELEGATES VISIT THE BETSUIN

by Elaine Fukumoto

“Embraced by the Oneness of Life” was the theme of the recent 15th World Women’s Buddhist Convention took place in Calgary, Canada. Jodo Shinshu Buddhists from the U.S., Japan, South America, Hawaii, and Canada were in attendance. (See Pam Tabata’s article in the July-August issue of the Jiho)

Months earlier, the Hiroshima BWA delegates contacted the Betsuin, expressing their wish to “get together” in Los Angeles following the the convention to share a meal with Betsuin BWA. Because part of the Betsuin BWA would be touring in Canada



Hiroshima BWA delegates, LA Betsuin BWA members, Betsuin members, and Nishi Center students gathered for the “kinen shashin” - commemorative photograph

following the convention, the Hiroshima BWA had dinner with the Betsuin members at a restaurant in Calgary. A couple of days later, during their visit to Los Angeles, the Hiroshima delegation (70+ members) were greeted at the Betsuin by the BWA members who did not attend the convention.

Coordinated by Rev. Takata and Judy Izumo, the visitation began in the hondo with a brief service and the Nishi Center students singing a few songs. Everyone then gathered outside for the commemorative group photo. The visitors were then given a tour of the different facilities at the Betsuin. Their visit culminated in the kaikan with everyone enjoying a bento lunch catered by Maison Akira.



Everyone gathered in the kaikan to share a bento lunch catered by Maison Akira.

FALL OHIGAN SERVICE

by Rev. Koho Takata

With the waning of the hot, relaxing summer days, the Buddhist communities in Los Angeles are reminded of the coming **Higan**, a time to reflect on the human condition and examine the options open to us through the Infinite Wisdom and Compassion of Amida Buddha. The members of Los Angeles Homba Hongwanji Buddhist Temple and their families are invited to attend one of the six major services in the Hongwanji tradition, the Fall Higan Rededication Service which will be held on **Sunday, September 20, 2015** at 10:00AM. The guest speaker for the service will be **Rev. Ronald Kobata** of the San Francisco Buddhist Temple for English Service and **Rev. Ryuta Furumoto** of the Senshin Buddhist Temple for Japanese Service.

Higan is an abbreviation of “To-Higan” - literally meaning “to reach the other shore.” In Buddhism, the world of suffering is referred to as “this shore” and the world of Enlightenment is called “other shore.”



Rev. Kobata

The term Higan comes from the Sanskrit word Paramita - “gone to other shore,” and suggests the Six Paramita of charity, morality, patience, effort, meditation, and wisdom. Various sutras teach that six paramita or perfections of practice are the way of reaching the other shore from this shore.

In Jodo Shinshu Buddhism, the observance of Higan is simply the expressing of our gratitude to Amida Buddha for awakening us to Boundless Compassion and Wisdom. Our part in this observance would be to put into action the Compassion which comes to us vertically from Amida Buddha and to apply it horizontally in our relation with man and other living beings on this earth. This appreciation in our daily life is the Jodo Shinshu Buddhism way of expressing our gratitude and thanksgiving for the wondrous virtues



Rev. Furumoto

(continued on page 5)

LADY ESHINNI AND KAKUSHINNI MEMORIAL SERVICE

by Rev. Koho Takata

The members of LA Hampa Hongwanji Buddhist Temple BWA and their families and friends are invited to attend the annual **Lady Eshinni and Kakushinni Memorial Service**, which will be held on Sunday, October 4, 2015. The guest speaker for the service will be **Rev. Kenneth Fujimoto, Rimban** of San Jose Betsuin.

Jodo Shinshu, which literally means "True Teaching of the Pure Land Way," was founded by Shinran Shonin. In 1224, Shinran Shonin completed the first draft of his major work "The True Teaching, Practice, and Realization of the Pure Land Way (Kyo-Gyo-Shin-Sho)." The Jodo Shinshu Hongwanji-ha (Kyoto) regards Shinran Shonin, who revealed the essential teaching of Primal Vow and the Name of Amida Buddha in his writing "Kyo-Gyo-Shin-Sho," as its founder and the completed year as the founding year. At the heart of its foundation were two women: **Lady Eshinni** (Shinran Shonin's wife) and **Lady Kakushinni** (Shinran Shonin's daughter).

Lady Eshinni gave Shinran Shonin her complete dedication and support. Her dedication is witnessed by her letters which were discovered in the archives of Hongwanji in 1921. Lady Eshinni is considered as the mother of Jodo Shinshu.

Lady Kakushinni established the foundation of Hongwanji to transmit Nembutsu teachings for many generations. After Shinran Shonin's passing, she built a small temple in Higashiyama, Otani in Kyoto to enshrine Shinran Shonin's ashes and portrait. This temple gradually developed and became Hongwanji.

The World Federation of Jodo Shinshu Hongwanji-ha BWA respectfully adopted the following resolutions:

1967 (Honolulu, Hawaii): Encourage BWA members to read "Letter of Eshinni" written by Lady Yoshiko Ohtani

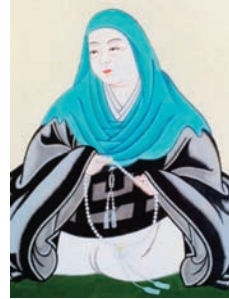
1978 (Sao Paulo, Brazil): Established "Eshinni Day": Donation of the day to help youth activities

1986 (Kyoto, Japan): Designated "Eshinni Day" as World Peace Day

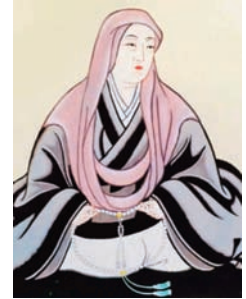
2002 (Sao Paulo, Brazil): Celebrate and Honor the life of Kakushinni

This is a time to remember and honor Lady Eshinni and Lady Kakushinni who have greatly contributed to establish the foundation of Hongwanji. Let us gather at temple the opportunity given by Lady Eshinni and Lady Kakushinni for listening to Buddha-Dharma, their spiritual foundation.

In conjunction with Lady Eshinni and Lady Kakushinni Memorial Service, we are fortunate to have a Special



Lady Eshinni



Lady Kakushinni

Seminar, co-sponsored by BWA and BEC, entitled "Life of Awakening: True Teaching" on Saturday, October 3, 2015. The seminar for Japanese speaking members will begin at 9:00am and end at 11:45am. For English speaking members, it will begin at 1:00pm and end at 3:15pm. The registration is available at temple office. The registration fee is \$10.00. We encourage all of you to hear the teaching of Shinran Shonin on the memorial of Lady Eshinni and Lady Kakushinni.

Fall Ohigan- continued from page 4)

extended to us unconditionally and equally for all just like the sun's ray which falls on the earth.

The donation envelope for Higan Service is attached to the Jiho, temple newsletter. The amount of donation is not set. It is up to your decision how much you wish to contribute toward receiving the dharma. Your sincere and mindful donation of any amounts is truly appreciated to offset the expenses of the major service. This enables all of us, as a sangha, to listen to the dharma on this special occasion. We sincerely ask for your understanding and cooperation as we devote ourselves to listen to and share the teachings of the nembutsu through the embrace of Amida Buddha's Wisdom and Compassion, never to be abandoned.

In conjunction with Fall Higan Service, we are fortunate to have a **Fall Higan Seminar** entitled "Life of Awakening: True Teaching" on Saturday, September 19, 2015. The seminar will begin at 9:00am and end at 3:00pm. The registration is available at temple office. The deadline will be on September 13, 2015. The registration fee is \$15.00 including lunch and refreshments. We encourage all of you to hear the teaching of Shinran Shonin who clarified the purpose of our lives.

FALL DHARMA CENTER COURSES

COURSES

The Dharma Center of the Los Angeles Homba Hongwanji Buddhist Temple will be offering the following classes in General Buddhism and Jodo Shinshu Buddhism. The classes will be introductory for those who are new to the Buddhist concepts and continuing education for those already learning the Truth of the Dharma to live each moment in the Teachings. Let us all enrich our lives by listening to the Teachings.

Jodo Shinshu in Daily Life

by Rev. Koho Takata

Monday, 6:30-8:00PM

September 14, 21, 28, October 5, 12, 19 (6 week class: \$60)

Shinran Shonin, founder of Jodo Shinshu, taught us the importance of actualizing and realizing the Buddha-Dharma in our daily life. Let us fill our life with joy of the Nembutsu and live together in the Light and Life of Namo-Amidabutsu.

Tannisho - A Record in Lament of Divergences

by Rev. Ryuta Furumoto

Tuesday, 7:00-8:30PM

September 1, 15, 22, 29, October 6 (5 week class: \$50)

"Tannisho (A Record in Lament of Divergences)" is a Jodo Shinshu classic. This record of Shinran Shonin's words and teachings is easy to read, and each chapter is not long, so it is often read as an introduction to Jodo Shinshu teaching. To deepen the understanding of Shinran Shonin's thought, several translations and the texts will be used at the class, such as "Collected Works of Shinran," Dr. Rev. Taitetsu Unno's translation, and Japanese original text.

Contemporary Issues and Jodo Shinshu Perspective

by Rev. William Briones

Wednesday, 7:00-8:30PM

September 2, 9, 16, 30, October 7 (5 week class: \$50)

Issues like same sex marriage, immigration, global warming were not an issue during Shinran's life, on the other hand there was war, sexism, and poverty during his time. What is our understanding of these contemporary issues living a life of Nembutsu? These five lectures will discuss current events and issues that effect our way of life and how Jodo Shinshu Buddhism influences our view point.

Death and Dying - Jodo Shinshu Tradition

by Rev. Masao Kodani

Thursday, 7:00-8:30PM

September 3, 17, 24, October 1, 15, 22 (6 week class: \$60)

Jodo Shinshu Buddhism (Jpn)

by Rev. Kazuaki Nakata

Every Friday, 10:00-11:00AM (\$5 per week)

Lady Eshinni, Wife of Shinran Shonin

by Rev. George Matsubayashi (Jpn)

Saturday, 9:30-11:00AM

September 12, 26, October 10, 24, November 7, 21 (6 week class: \$60)

Shin Buddhism on 'Dukkha' (Suffering): When it begins; Why it persists; When it comes to an end

by Rev. Tetsuo Unno

Saturday, 10:00-11:30AM

September 26, October 10, 17, 24, November 7 (5 week class: \$50)

Paraphrasing Aristotle, all human beings are in search for ways to end their suffering. Psychology, for example, is one way; Philosophy is another. So is Zen Buddhism. Finally, there is the Great Way of Shin Buddhism which will be the focus of these lectures.

Introduction to Buddhism/Jodo Shinshu Buddhism

by Rev. William Briones

Every Sunday, 11:00-11:30AM (free)

This class will be held right after the Sunday service. There will be Q & A for Dharma message from Sunday service. It will help you to understand the basic teachings of Buddhism and Jodo Shinshu Buddhism.

Applied Jodo Shinshu Buddhist Studies for Teens (Age 11 and up)

by Rev. Kazuaki Nakata

Sunday, 11:30-12:15AM (free)

September 13, 20, October 4, 11, 18, November 1, 8, 15, 22, 29, December 13, 27

This course fully covers "Sangha Award" and "Padma Award for Cadettes and Senior" requisites. Main Purpose of this course is to cultivate the ability of the critical problem-solving, the sense of the mindfulness, the skill to reduce/manage one's stress, the character of gentleness and the mind to make one's life more appreciative through the teaching of Jodo Shinshu Buddhism.

If you wish to register for a course, please indicate which course(s) you wish to participate in and submit a check for the total amount (payable to: LAHHBT).

The course tuition is non-refundable for missed classes.

For further information, please contact the Betsuin office at 213-680-9130 or email:

lanishihongwanji@gmail.com

BWA 2015 SCHOLARSHIP RECIPIENT, CORIE YAGUCHI

Each year the Betsuin BWA awards a scholarship to a graduating high school senior based on a submitted essay that reflects what has been learned as a Jodo Shinshu youth. This year, **Corie Yaguchi** is the BWA Scholarship recipient.

Corie is the daughter of Cindy and David Yaguchi. Her maternal grandparents, Walter and Florence Okano, have been long-time Betsuin members. She has two younger siblings, Daniel and Caryn. Corie is a graduate of Crescenta Valley High School in La Crescenta. She will be attending Cal Poly San Luis Obispo, majoring in Architectural Engineering, and has been accepted into the honors program.



Corie Yaguchi

The following is her essay:

It is difficult for me to define something as powerful, yet intangible, as Jodo Shinshu within 500 words, so I decided to just give some average, tangible examples of Jodo Shinshu to hopefully provide insight on what it means to me.

Jodo Shinshu is sweating over the chicken teriyaki grill during Obon or laughing when we overcook the somen noodles yet again in Jr. YBA. It is turning my phone on silent because I hear the kansho ringing and fidgeting with the purple service book trying to find page 62 for *Juseige*. It is being so excited because my new pink *nenju* is so cute and wearing it to service every week, or maybe even everyday. It is sitting in the pews listening to a sermon given by the keynote speaker at a Jr. YBL Conference and smiling at your friend down the aisle when he tries to make a joke.

Jodo Shinshu is not only present within the temple grounds. It is smiling when making eye contact with others because, hopefully, it brightens their day. It is getting really upset because you missed the new episode of "Pretty Little Liars" because there was too much traffic on the way home. It is washing the dishes for your mom because you know she is tired and worked hard all day to cook and clean the house for your friends to come over.

All of these things may seem superficial and not things that apply to Jodo Shinshu at all. However, Jodo Shinshu is present during Obon because we learn to work together and truly appreciate the meaning of *sangha*. Jodo Shin-

shu is turning your phone off because chanting is an important aspect of our religion. Jodo Shinshu is being proud to wear a *nenju*, even at school where you are the only Buddhist, because we are taught that everyone should be accepted for who they are. Jodo Shinshu is forming friendships in Jr. YBL because that expands our *sangha* beyond Nishi Hongwanji and hearing the teachings of the Buddha together. Jodo Shinshu is smiling at strangers because they may be having a rough day and compassion is one of our main focuses. Jodo Shinshu is recognizing that little things, like missing our favorite TV show, do bother us because we are not perfect and fall into greed, anger, and stupidity. Jodo Shinshu is showing gratitude for not only the things your mom does for you, but for everything that everyone does for you, everything you are given, and every opportunity you have. Jodo Shinshu is present in every moment of everyday of my life and is constantly forming me into the person I am and the person I am becoming.

HOLLYWOOD BUDDHIST CHURCH CENTENNIAL SPECIAL COMMEMORATION SEMINAR

*"Living in the Nembutsu:
Hearing the Origin and Establishment of
Primal Vow of Amida Tathagata (Hongwan)
& its Temple (Hongwan-ji: Temple of Primal Vow)"*

What it means to preserve the legacy and Buddhist
heritage handed down by our founders



Saturday, October 31, 2015
@LA Homba Hongwanji Buddhist Temple
Special Guest Speaker: Bishop Kodo Umezu

Registration: 8:30am
Opening: Memorial Service @ Nokotsudo: 9:00am
Seminar: 9:30am-12:00pm
Registration Fee including Lunch: \$15.00
(Payable to: Hollywood Buddhist Church)
Please contact temple office @213-680-9130 to register

BETSUIN PHOTOS



Family Fun Day — Enjoyed by all ...young and old and in between



Hatsubon Service
Names of deceased displayed



The ministers conduct a brief service
before the bon odori begins.



Rimban Briones and temple
president, Kenji Hatakeyama



Dancers, dancers, dancers.....



Rev. Nakata & Rev. Watanabe



Stylish...



Rev. George & Mrs.
Kay Matsubayashi...



Bon daiko guided by his mom...

MORE OBON PHOTOS



Bon daiko newbie...



Odori teachers...



Bon daiko kids, led by Yuki Inoue...



LA Matsuri Daiko...



Cha No Yu...



Games...



Obon 6:00 am crew take a breakfast break...cooked rice in foreground for chirashizushi, inarizushi, and makizushi



Food and BINGO...



After obon dancing... dancing to the Kokoro Band



The new dance area. The west parking lot.

(Rimban - continued from page 1)

of monsters work for these despicable companies?

However, if you really reflect upon this, they are good hard-working people that work at these companies And just like me their jobs put food on the table, a roof over their head for their families.

The opening reading is from the 13th chapter of the *Tan-nisho*, here the author, Yuien-bo, covers a lot ground. The gist of the chapter is that Shinran places great emphasis on the role of karma in human behavior. He explains that all our acts, whether good or bad, are the outcome of past karma.

It is well known that before and during Shinran's time, social status was based on ones occupation. Therefore farmers, hunters, fisherman, gravediggers were considered the lower class. Not only were these groups looked down upon, but it was understood during this time, that their salvation was uncertain for this group of workers.

Shinran might have been the first to address these social undesirables. He understood that these workers were born into this occupation and/or social standing and they had absolutely no control over their lives. Shinran understood that we all have our needs and desires that dictate behavior and create inconsistencies in what we believe and how we live our life.

The Jodo Shinshu teachings are deeply rooted in the law of cause and effect, also known as karma. There is no judge and no judgment. There is no right and no wrong, good or evil. There is only the effects of our thoughts, words and actions. These effects exist as the consequences of what we think, say and do. And, how we respond to these effects, determines what our next moment shall be. It determines what type of person I shall become.

Many people think what I did as an occupation was despicable. Yet we eat McDonalds without thinking that 10's of thousands of cows are slaughtered methodically and systematically every day so you could get a quick, inexpensive meal.

Higher up on the food chain.... the taking of human life is condemned by most religions. Meaning, it is wrong to kill another human being. On one extreme, this is what we are taught. On the other hand, we are also told that it's permissible to kill under certain circumstances such as war, criminal executions or in self-defense. With such contradictions, it is no wonder that we are confused, and religion is often accused of being hypocritical.

Jodo Shinshu does not place a good or bad label upon an action. Depending on the circumstances, we must all make the best decision at that moment.

For Shinran, faith, is a faith beyond good and evil, because

of our human limitations, our biases, and our prejudices are incapable of knowing what truly constitutes good and evil. Therefore, at a mundane level, no one can judge who will or will not be saved. No one has the right to judge anyone else. Jodo Shinshu's concern is showing us our true nature in the light of the nembutsu and less concern in telling us how we should be living our lives.

Do I regret what I did in my last profession? During my 28 years of employment, my family and I lived a very comfortable life style. In addition to Aleve, Syntex developed several drugs to treat chronic illnesses and major diseases. Where I am and who I am is a result of those causes and conditions of my karmic past. Do I regret what I did? ... The question is moot.

gassho



2015 Obon
Raffle Winner:
Miguel Jesus Fernandez

IN MEMORIAM

The *Nishi Betsuin* extends its deepest condolences to the families of the following members who have recently passed away. May the family members find solace and comfort in the *Nembutsu*.

--*Namo Amida Butsu*

June 2015

14 Itsuko Mayeda	29 Attado "Spud" Shiraki
15 Richard Tatsuro Kaku	
15 Hiroko Yoshida	
23 Toshiko Yoshihara	
23 Teruyo "Tootsie" Yoshimura	

July 2015

1 Yasuo "Johnny" Yamaji

Betsuin Jiho

Editor-in-Chief: Rimban William Briones
English Editor: Elaine Fukumoto
Photos: Koichi Sayano and Glen Tao

NISHI ABA & HUI AIKANE

PRESENT:

**A DINNER AND BINGO
FUND RAISING EVENT***

(Part Two)

When: Saturday, November 7, 2015

Where: Nishi Kaikan

Dinner Served from 5pm until 6:30pm

(Menu: Teri Chicken, Hawaiian Style Chow Mein, Rice, Salad and Tea)

Bingo from 6:30pm to 9pm

\$15 dinner & 1 Bingo card (good for the entire evening!)

\$10 dinner only



Special Bingo games throughout the evening and a 50-50 drawing!

Preordering is recommended as only

a limited number of dinners will be served, and only a

limited number of tickets will be available at the door

This is a "dine-in" only event.



*All proceeds to benefit the Nishi Hongwanji 50th Anniversary Restoration Fund

Please return with payment in an envelope marked "**Bingo & Dinner- Part Two**" addressed to:

*LA Hampa Hongwanji
815 E. First Street
Los Angeles, CA 90012*

or leave envelope in Temple Office **no later than Sunday, October 25, 2015.**

_____ DINNER & BINGO CARD @ \$15 each

_____ DINNER ONLY @ 10 each

TOTAL ENCLOSED \$ _____

NAME _____

SEPTEMBER 2015

Sunday	Monday	Tuesday	Wednesday	Thursday	Friday	Saturday
		1	2	3	4	5
		Tannisho-A Record in Lament of Divergences Study Class 6:00 pm Rev. Furumoto 7:00-8:30 pm	Contemporary Issues & Jodo Shinshu Perspective Rev. Briones 7:00-8:30 pm	Death & Dying - Jodo Shinshu Tradition Rev. Kodani 7:00-8:30 pm	Jodo Shinshu Buddhism (Jpn) Rev. Nakata 10:00-11:00 am	
Bon Odori Exercise 8:30 am 6 Regular Service 10:00 am	7 Labor Day Temple Closed	8 Bon Odori Exercise 6:30 pm Tannisho-A Record in Lament of Divergences Study Class 6:00 pm Rev. Furumoto 7:00-8:30 pm	9 Contemporary Issues & Jodo Shinshu Perspective Rev. Briones 7:00-8:30 pm	10 Board Meeting 7:30 pm	11 Jodo Shinshu Buddhism (Jpn) Rev. Nakata 10:00-11:00 am	12 Lady Eshinni (Jpn) Rev. Matsubayashi 10:00-11:30 am
Regular Service 10:00 am Dharma School Registration Applied Jodo Shinshu Buddhist Studies for Teens Rev. Nakata 11:30 am-12:15 pm	14 Jodo Shinshu in Daily Life Rev. Takata 6:30-8:00 pm	15 Tannisho-A Record in Lament of Divergences Study Class 6:00 pm Rev. Furumoto 7:00-8:30 pm	16 Go-Meinichi-ko 1:30 pm Contemporary Issues & Jodo Shinshu Perspective Rev. Briones 7:00-8:30 pm	17 Death & Dying - Jodo Shinshu Tradition Rev. Kodani 7:00-8:30 pm	18 Jodo Shinshu Buddhism (Jpn) Rev. Nakata 10:00-11:00 am	19 Ohigan Seminar 9:00 am-3:00 pm
Bon Odori Exercise 8:30 am 20 Ohigan Service 10:00 am Applied Jodo Shinshu Buddhist Studies for Teens Rev. Nakata 11:30 am-12:15 pm	21 Jodo Shinshu in Daily Life Rev. Takata 6:30-8:00 pm	22 Bon Odori Exercise 6:30 pm Tannisho-A Record in Lament of Divergences Study Class 6:00 pm Rev. Furumoto 7:00-8:30 pm	23	24 Death & Dying - Jodo Shinshu Tradition Rev. Kodani 7:00-8:30 pm	25 Jodo Shinshu Buddhism (Jpn) Rev. Nakata 10:00-11:00 am	26 Shin Buddhism on Dukkha Rev. Unno 10:00-11:30 am Lady Eshinni (Jpn) Rev. Matsubayashi 10:00-11:30 am
BEC Breakfast (Dharma School Teachers) 9:00 am 27 Regular Service 10:00 am	28 Jodo Shinshu in Daily Life Rev. Takata 6:30-8:00 pm	29 Tannisho-A Record in Lament of Divergences Study Class 6:00 pm Rev. Furumoto 7:00-8:30 pm	30 Contemporary Issues & Jodo Shinshu Perspective Rev. Briones 7:00-8:30 pm			

OCTOBER 2015

Sunday	Monday	Tuesday	Wednesday	Thursday	Friday	Saturday
				1 Death & Dying - Jodo Shinshu Tradition Rev. Kodani 7:00-8:30 pm	2 Jodo Shinshu Buddhism (Jpn) Rev. Nakata 10:00-11:00 am	3 Eshinni-Kakushinni Seminar
Bon Odori Exercise 8:30 am 4 Eshinni-Kakushinni Memorial Service 10:00 am Applied Jodo Shinshu Buddhist Studies for Teens Rev. Nakata 11:30 am-12:15 pm	5 Jodo Shinshu in Daily Life Rev. Takata 6:30-8:00 pm	6 Tannisho-A Record in Lament of Divergences Study Class 6:00 pm Rev. Furumoto 7:00-8:30 pm	7 Contemporary Issues & Jodo Shinshu Perspective Rev. Briones 7:00-8:30 pm	8 Board Meeting 7:30 pm	9 Jodo Shinshu Buddhism (Jpn) Rev. Nakata 10:00-11:00 am	10 Shin Buddhism on Dukkha Rev. Unno 10:00-11:30 am Lady Eshinni (Jpn) Rev. Matsubayashi 10:00-11:30 am
11 Regular Service 10:00 am Applied Jodo Shinshu Buddhist Studies for Teens Rev. Nakata 11:30 am-12:15 pm	12 Jodo Shinshu in Daily Life Rev. Takata 6:30-8:00 pm	13 Bon Odori Exercise 6:30 pm	14	15 Death & Dying - Jodo Shinshu Tradition Rev. Kodani 7:00-8:30 pm	16 Jodo Shinshu Buddhism (Jpn) Rev. Nakata 10:00-11:00 am Go-Meinichi-ko 1:30 pm	17 Shin Buddhism on Dukkha Rev. Unno 10:00-11:30 am
Bon Odori Exercise 8:30 am 18 Regular Service 10:00 am Applied Jodo Shinshu Buddhist Studies for Teens Rev. Nakata 11:30 am-12:15 pm	19 Jodo Shinshu in Daily Life Rev. Takata 6:30-8:00 pm	20	21	22 Death & Dying - Jodo Shinshu Tradition Rev. Kodani 7:00-8:30 pm	23 Jodo Shinshu Buddhism (Jpn) Rev. Nakata 10:00-11:00 am	24 Shin Buddhism on Dukkha Rev. Unno 10:00-11:30 am Lady Eshinni (Jpn) Rev. Matsubayashi 10:00-11:30 am
25 Regular Service 10:00 am	26	27 Bon Odori Exercise 6:30 pm	28	29	30 Jodo Shinshu Buddhism (Jpn) Rev. Nakata 10:00-11:00 am	31